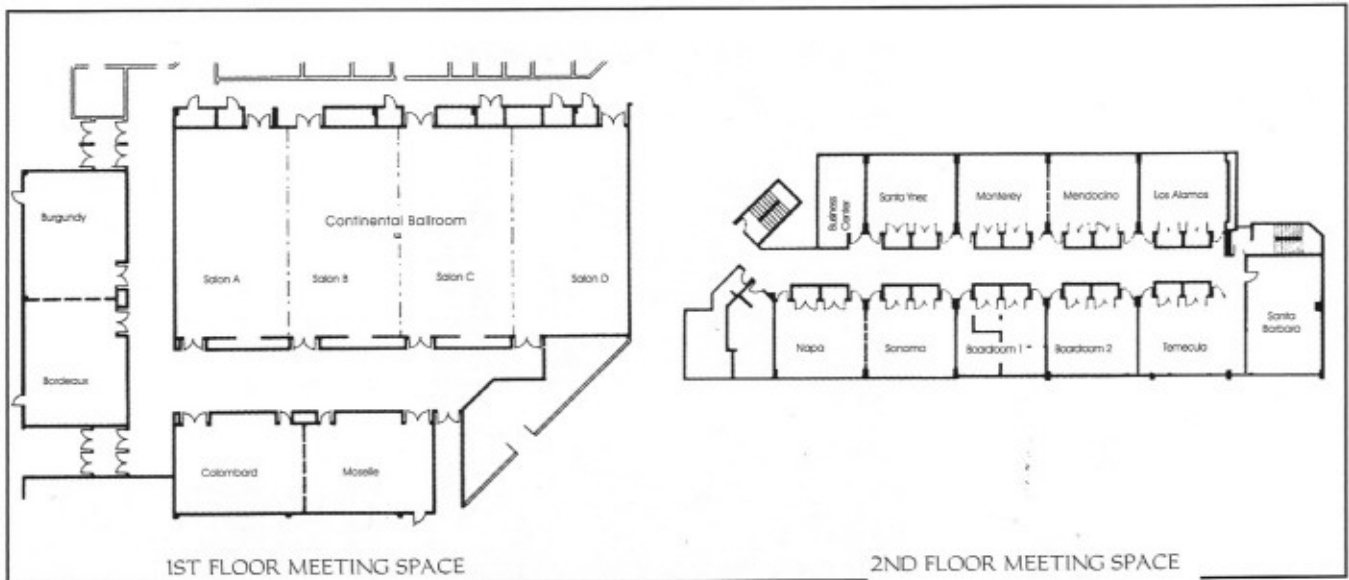


MEETING AND BANQUET FACILITIES

Our professional Sales and Catering Team are available to ensure the success and comfort of your next company function, retreat, or social gathering.

We offer 14,000 square feet of flexible, column-free meeting space which can accommodate an intimate group of 5 to banquets for 500. All meeting rooms and each section of our Ballroom have built-in white boards and all first floor meeting rooms have built-in screens.

From Sales Meetings to Banquets to Executive Board Meetings, we have the space for your event.



	Capacities						Dimensions			
	Theater	Classroom	Conf.	U	Banquet	Recpt.	Length & Width	Sq. Ft.	Ceiling	
Continental Ballroom	675	400	N/A	210	500	800-Flow	113'x52'	5876	10/12	
Salon A	150	100	62	52	120	200	52'x28.5'	1482	10/12	
Salon B	150	100	62	52	120	200	52'x28'	1456	10/12	
Salon C	150	100	62	52	120	200	52'x28'	1456	10/12	
Salon D	150	100	62	52	120	200	52'x28.5'	1482	10/12	
First Floor-Meeting Rooms										
Burgundy	65	50	30	30	60	75	32'x22'	704	9	
Bordeaux	65	50	30	30	60	75	32'x22'	704	9	
Combined	150	100	70	65	120	150	64'x22'	1408	9	
Colombard	65	50	30	30	60	75	32'x22'	704	9	
Moselle	65	50	30	30	60	75	32'x22'	704	9	
Combined	150	100	70	65	120	150	64'x22'	1408	9	
Second Floor-Conference Rooms										
Napa	40	24	20	18	40	40	24'x21'	504	9	
Sonoma	40	24	20	18	40	40	24'x21'	504	9	
Combined	80	48	40	36	80	80	48'x21'	1008	9	
Santa Barbara	40	24	20	18	40	40	27'x20'	504	9	
Monterey	40	24	20	18	40	40	24'x21'	504	9	
Mendocino	40	24	20	18	40	40	24'x21'	504	9	
Combined	80	48	40	36	80	80	48'x21'	1008	9	
Los Alamos	40	24	20	18	40	40	24'x21'	504	9	
Santa Ynez	40	24	20	18	40	40	24'x11'	504	9	
Temecula	40	24	20	18	40	40	24'x11'	504	9	
Board Room 1	Permanent Seating for 10							24'x11'	504	9
Board Room 2	Permanent Seating for 10							24'x11'	504	9



LOS ANGELES AIRPORT
1-800-2CROWNE

SABRE HI3360 • APOLLO HI2038 • WORLDSPAN HI1713 • SYSTEM ONE/AMADEUS HI6B1
www.lax-intlapt.crowneplaza.com
cplaxsales@6c.com